



MINERVA

R2106E SATA 3 to mSATA 2-port & M.2 2-port RAID

RAID 0 Mode Performance & Burn In Test Rev. 1.0

Table of Contents

1. Overview

2. Performance Measurement Tools and Results
 - 2.1 Test Platform
 - 2.2 Test target and Used SATA III / mSATA SSD
 - 2.3 Install Hardware
 - 2.4 BIOS & Windows 8.1 x64 OS environment setup
 - 2.5 CrystalDiskMark 3.0.3 x64 performance test
 - 2.6 AS SSD Benchmark 1.7 performance test
 - 2.7 ATTO Disk Benchamrk 2.47 performance test
 - 2.8 AnvilBenchmark_V110_B337 Benchmark performance test

3. Burn In Tests and Results
 - 3.1 BurnInTest V8.0 Pro burn in test

4. Summary

R2106E SATA 3 to mSATA 2-port & M.2 2-port RAID Card

1. Overview

R2106E RAID card offers SATA 3 interface, built-in 2-port Mini PCI-e 52-pin connector & 2-port M.2 B key connector, can be combined mSATA SSD into a RAID 0, RAID 1, JBOD mode.

This test report is based mSATA SSD x2, RAID 0 set as a benchmark.

2. Tools and Results of Performance Measurement

2.1 Test Platform

M/B : ASRock **Z97 Extreme 6**
CPU : Intel **i5-4426**, 3.2GHz/ 6M Cache/ LGA1150
Memory : Kingston **KVR16N11S8/4**, DDR3-1600MHz, 8G(4GB DIMM*2)
ATX Power : FSP RAIDER 550, **550W ATX**, 12V V2.2 Power Supply
Graphic : Z97 Chipsets built-in **HD Graphics 4600**
OS : Microsoft **Windows 8.1 64bit OS**

2.2 Test target: R2106F RAID Card and mSATA SSD(Crucial [CT-128M550SSD3/128GBx2](#))

2.3



R2106E Adapter



CT128M550SSD3 x2

2.4 Install Hardware

2.3.1 Insert mSATA SSDx2 into R2106E converter's Mini PCI-e connector, and then with coppers, and screws to fix SSDs. (Please refer to the Installation Notes). Connect R2106E converter to **SATA III Port of ASRock Z97 Extreme6**.

2.5 BIOS & Windows 8 OS environment setup

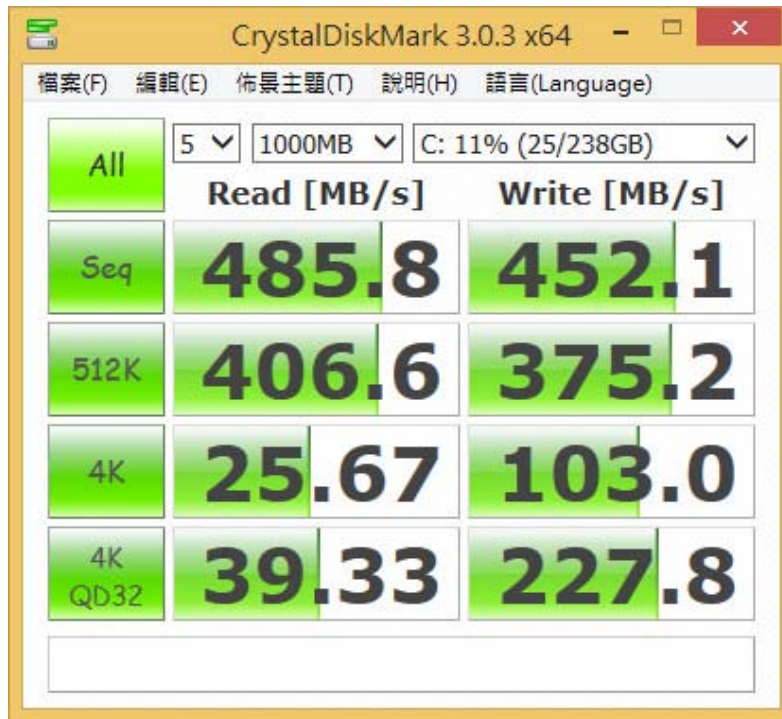
2.4.1 Install Windows 8.1 x64 OS.

R2106E SATA 3 to mSATA 2-port & M.2 2-port RAID Card

2.6 CrystalDiskMark 3.0.1 x64 performance test

※Benchmark (Sequential **Read & Write** / default = **1MB**)

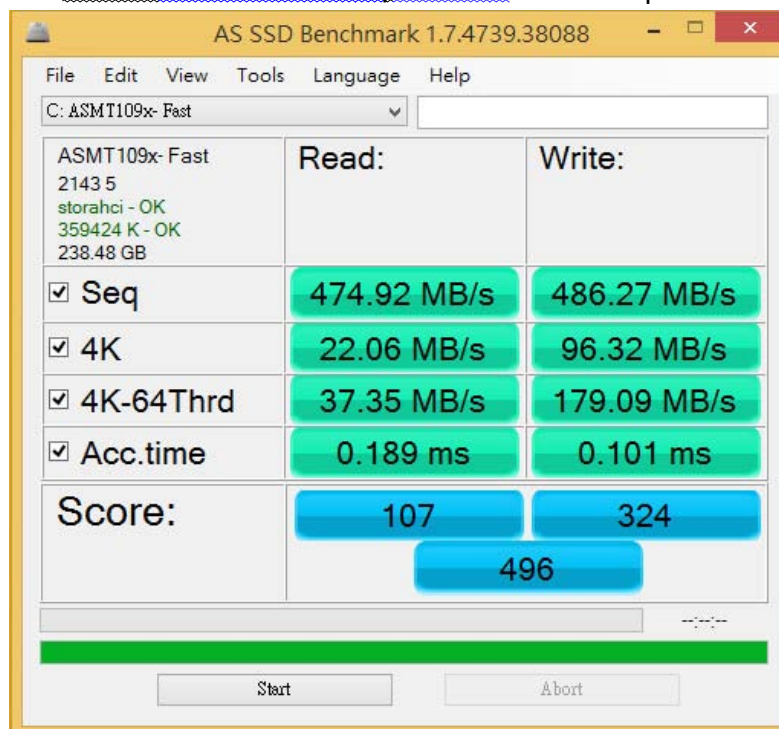
2.5.1 Used Crucial [CT-128M550SSD3/128GBx2](#) in **RAID 0** performance as below:



2.6 AS SSD Benchmark 1.7 performance test

※Benchmark (**Read & Write** by MB/s, default block size = **16MB**)

2.6.1 Used Crucial [CT-128M550SSD3/128GBx2](#) in **RAID 0** performance as below:

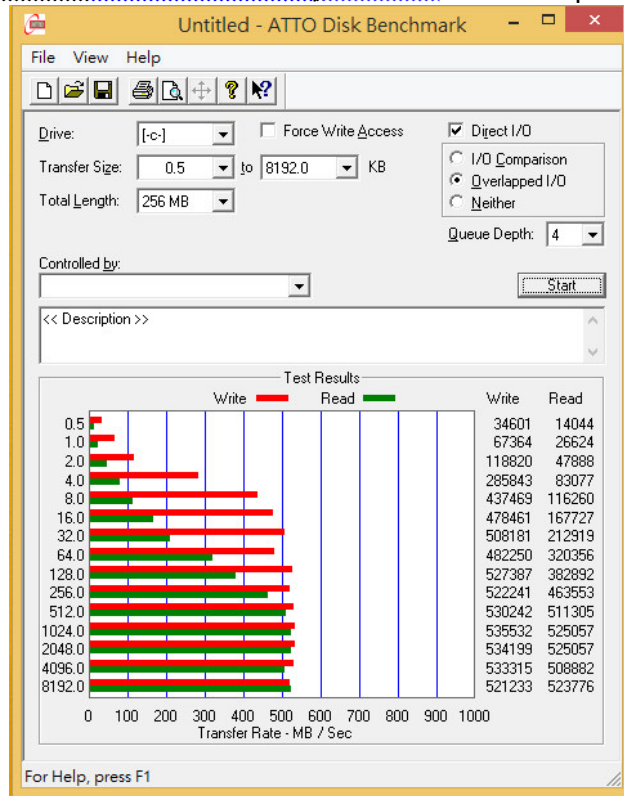


R2106E SATA 3 to mSATA 2-port & M.2 2-port RAID Card

2.7 ATTO Disk Benchmark performance test

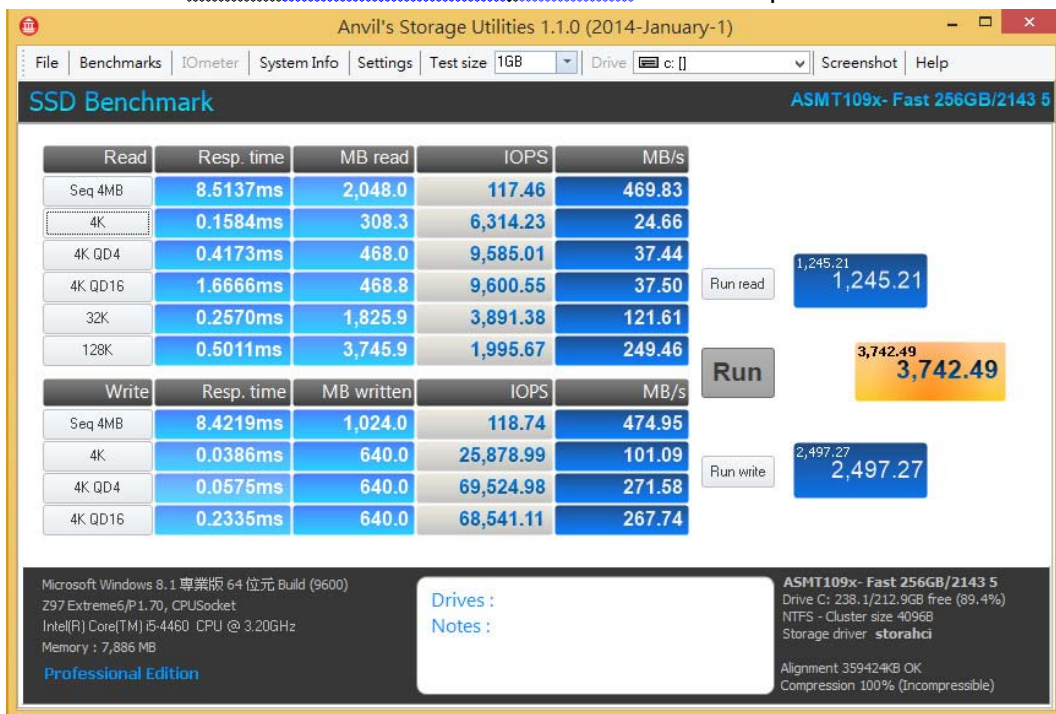
※Benchmark (Sequential Read / default block size = 8MB)

2.7.1 Used Crucial CT-128M550SSD3/128GBx2 in RAID 0 performance as below:



2.8 AnvilBenchmark_V110_B337

2.8.1 Used Crucial CT-128M550SSD3/128GBx2 in RAID 0 performance as below:

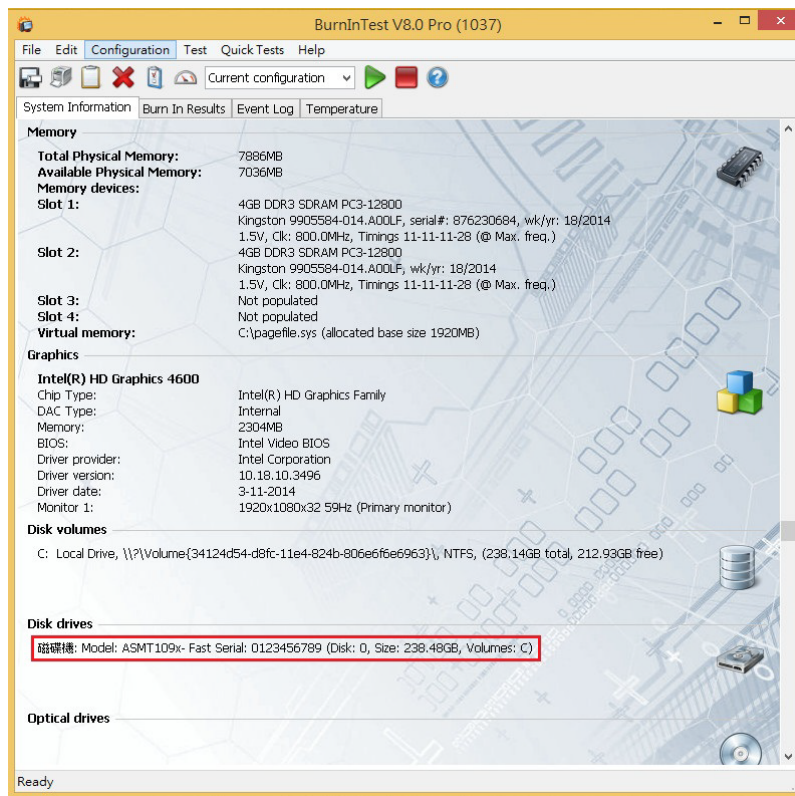
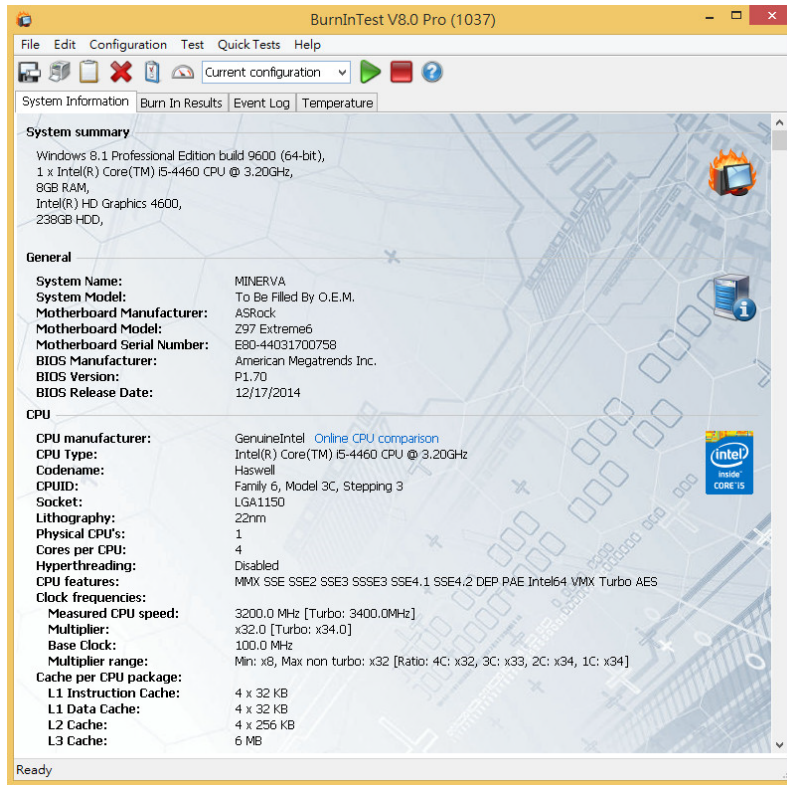


R2106E SATA 3 to mSATA 2-port & M.2 2-port RAID Card

3. Burn In Tests and Results

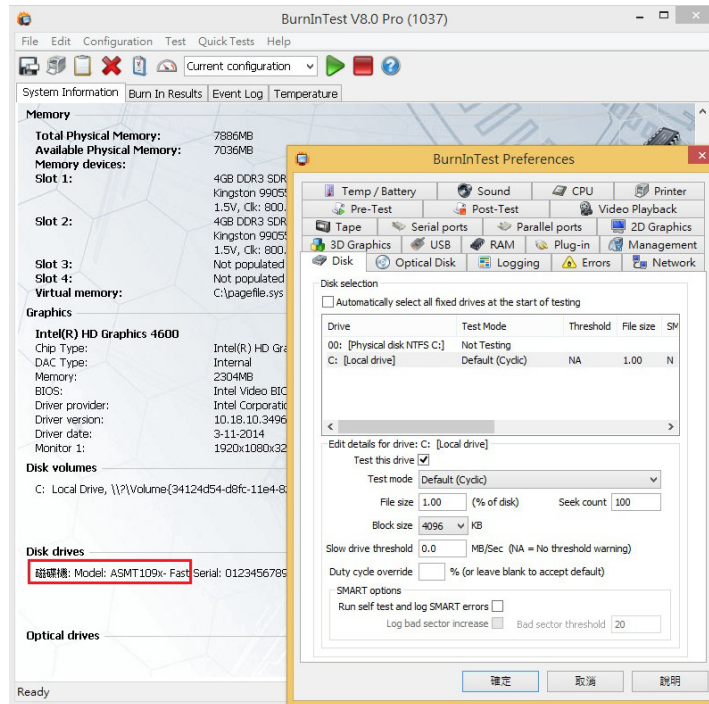
3.1 BurnInTest v7.1 Pro

3.1.1 **system information** for [CT-128M550SSD3/128GBx2](#) in **RAID 0** as below:

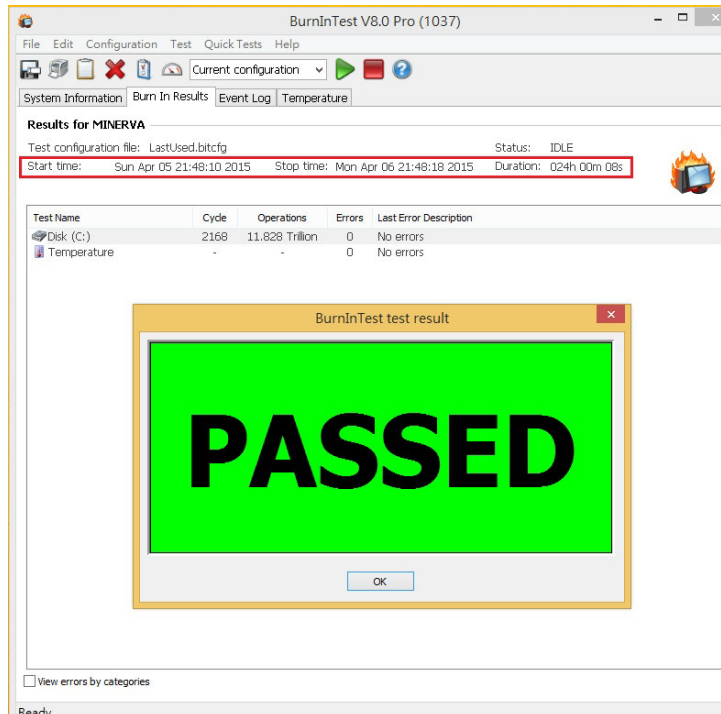


R2106E SATA 3 to mSATA 2-port & M.2 2-port RAID Card

3.1.2 show **RAID 0** SSD test mode(default cyclic -- 10 ways cycle test)



3.1.3 show [CT-128M550SSD3/128GBx2](#) in **RAID 0** 24-hour Burn-in test **PASSED**



4. Summary

- 4.1 R2106E is SATA III Interface, I/O speed, max. to 600MB/s.
- 4.2 R2106E adapter I/O performance is based on mSATA SSD.